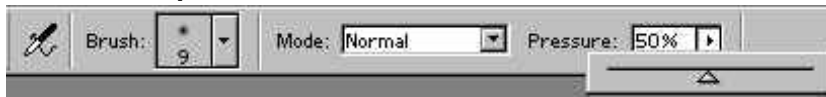


Lesson 1.2

Using context menus, Using online Help, Adobe online services and Jumping to ImageReady

Using context menus

In addition to the menus at the top of your screen, context menus display commands relevant to the active tool, selection, or palette.



Context menu

Using online Help

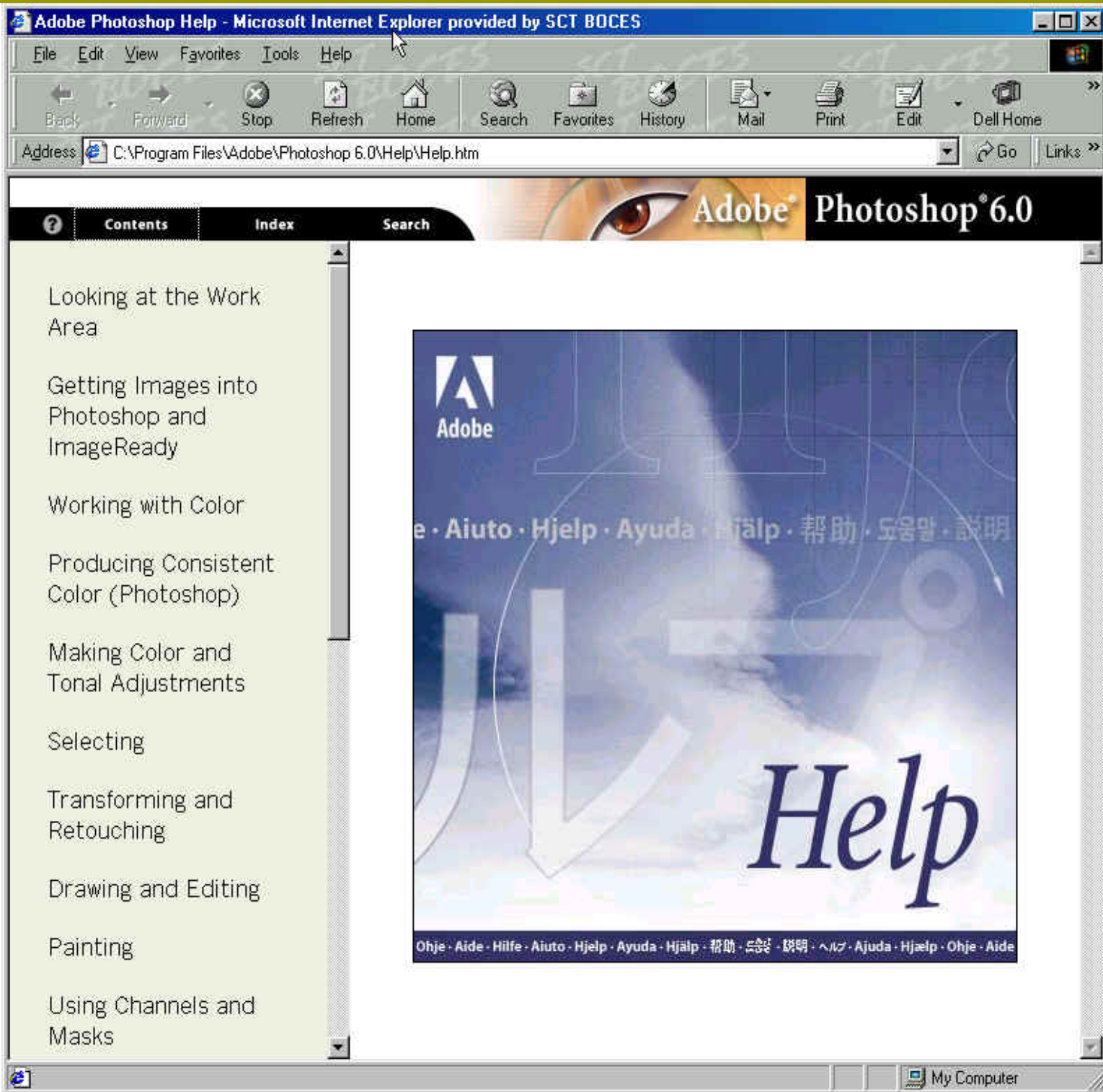
For complete information on Photoshop and ImageReady about using palettes, tools, and the application features, you can use the online Help. Which I strongly recommend, it's an awesome resource.

Adobe Photoshop and ImageReady each include complete documentation in online Help plus keyboard shortcuts, full-color galleries of examples, and more detailed information about some procedures.

Online Help is easy to use, because you can look for topics in several ways:

- Scanning a table of contents.
- Searching for keywords.
- Using an index.
- Jumping from topic to topic using related topic links.

Check it out, It'll be worth



Using Adobe online services

Another way to get **information** on Adobe Photoshop or on related Adobe products is to use the **Adobe online services**. You need a Internet connection and a Web browser, like Microsoft internet explorer. This will allow you to access Adobe Systems Web site (www.adobe.com) for information on services, products, and tips pertaining to Adobe products including Photoshop.



Jumping to ImageReady

Jumping between the applications lets you use the full features sets of both applications when preparing graphics for the Web or other purposes yet still maintain a streamlined workflow. Jumping to another application also saves you from having to close the file in Photoshop and reopen it in the other application.

In Photoshop, click the Jump To ImageReady button. It's located at the bottom of the tool bar. This transfer of an image between the two applications for editing, without closing or exiting the originating application. In addition, you can jump from ImageReady to other graphic-editing applications and HTML-editing applications installed on your system.

Select **Jump To**, or choose **File > Jump To > Adobe Photoshop** to return to Photoshop.

-From Adobe Photoshop 6.0